



Tremors and shakes of earth plates cause earthquakes.

Focus

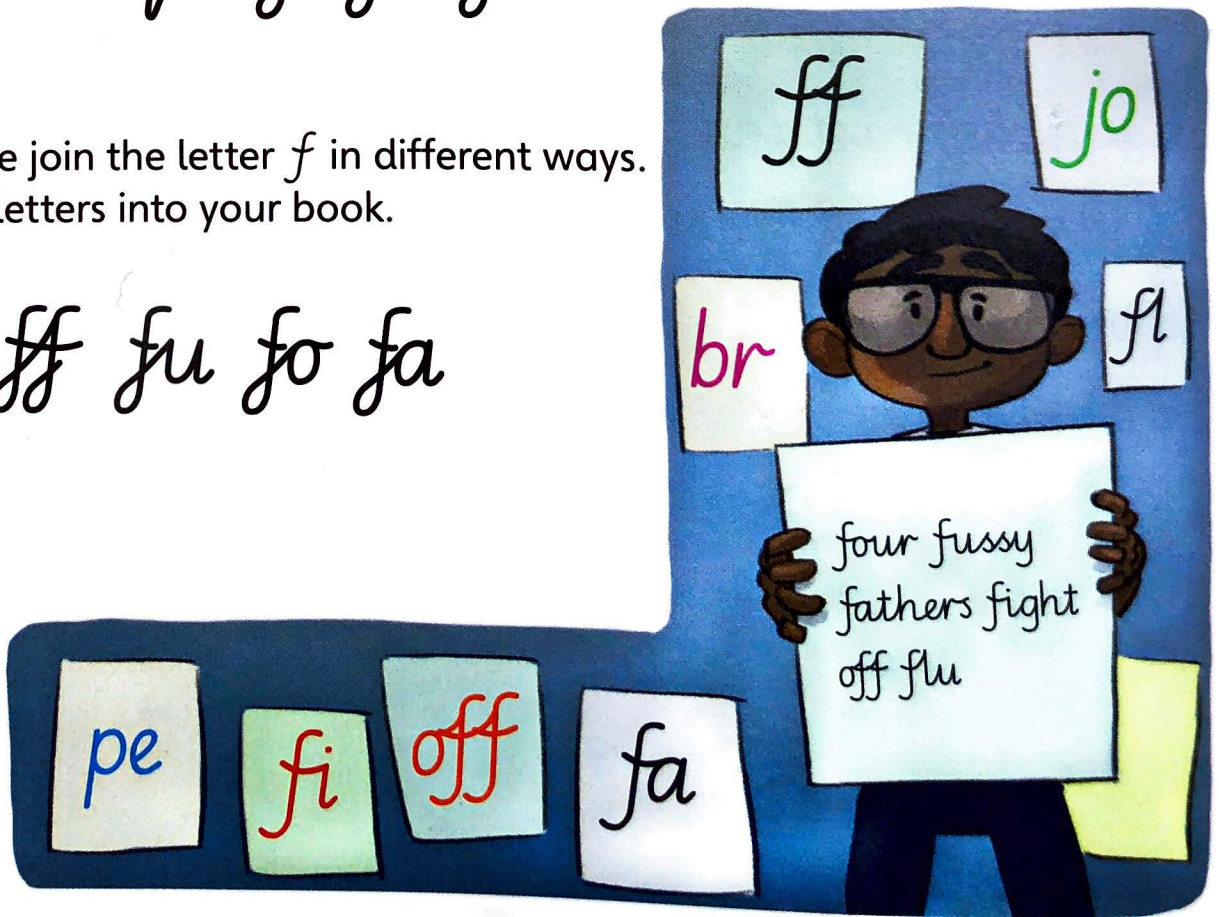
People can develop different handwriting styles.

- A** Some people make a join from the break letters. Copy these letters into your book.

br pe zo qu gi jo yo

- B** Some people join the letter *f* in different ways. Copy these letters into your book.

fl fi ff fu fo fa



Extra

Add the suffixes *ful* and *less* to make these words.
The first one has been done for you.
Write the words in your book in a different handwriting style.

hope + *ful* = hopeful hope + *less* = hopeless

care

shame

joy



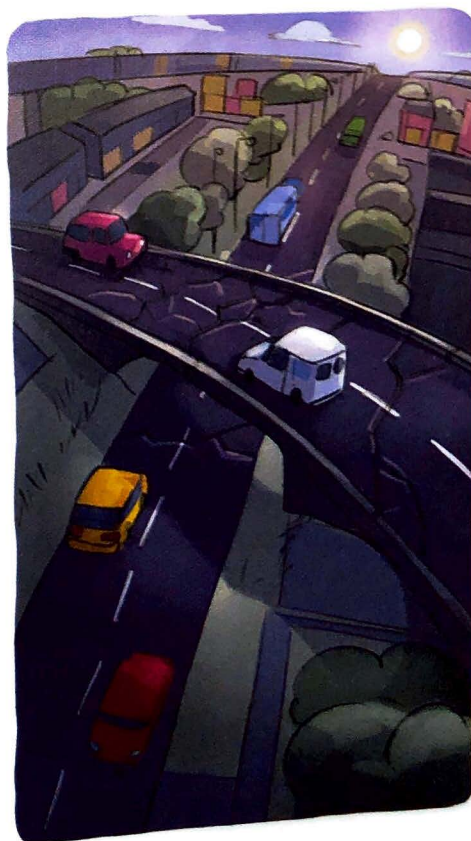
Whatever writing style you use, you must be consistent when forming and joining your letters.



Extension

Copy these sentences in different writing styles into your book.
Which style do you prefer?

- 1 Although the ground we walk on seems solid, the Earth's surface is actually made up of huge pieces of flat rock called tectonic plates.
- 2 These plates float on top of a softer layer called the mantle.
- 3 When the plates rub together, the movement causes waves of energy to reach the surface.
- 4 Earthquakes can cause a lot of damage to buildings, roads and bridges.



Focus

Copy these letters and words into your book.

un ue es ed ay ny

sun sunny Tuesday Wednesday

at al sl il it th

slight small faithfully illumination

oi fe re fu op oy

join fear care hoping joyful

rt rl rf wh of off

short who performed interlink

b g j p q x y z

pizza bhaji bigger joyless



Extra

- A** Copy these words into your book, forming and joining your letters correctly.

eleven twelve thirteen fourteen fifteen
sixteen seventeen eighteen nineteen twenty

- B** Copy these words into your book in fluent and legible handwriting.

nought ten twenty thirty
forty fifty sixty seventy
eighty ninety one hundred

