

Useful Contacts

Mr Damian Hewitt – Head Teacher

Mrs Eli Wapner Carter – Deputy Head Teacher

Mrs George – Assistant Head Teacher

School Number: 01437 762701

Email: Admin.portfield@pembrokeshire.gov.uk

Website: <https://portfield-special-school.j2bloggy.com>

School Hours:

Primary School 9.05–3.15

Secondary School 8.55–3.15

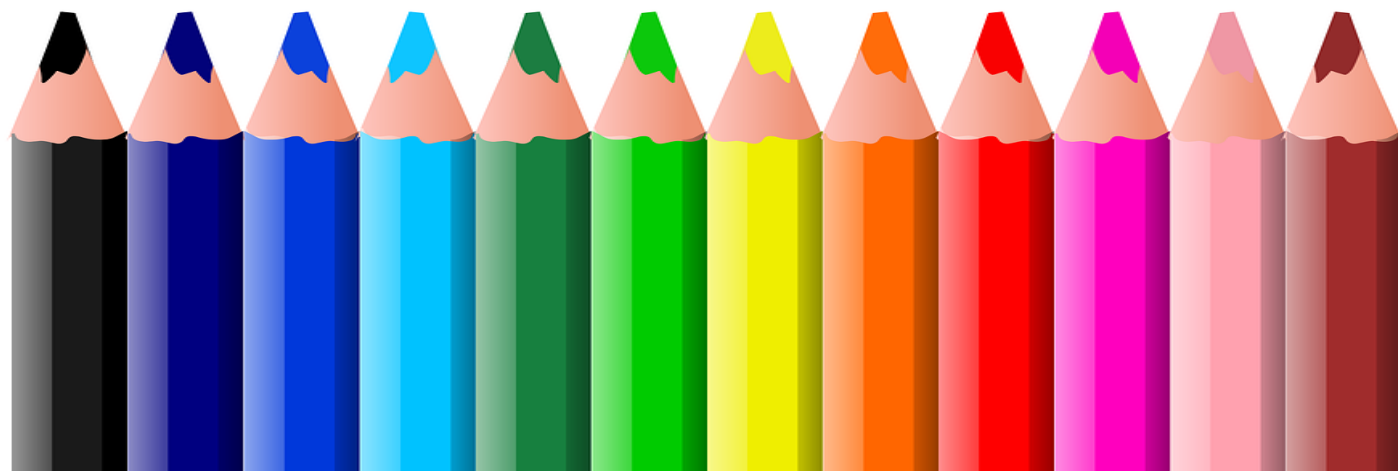
Term Dates:

See Pembrokeshire County Council and

Portfield School website



Working Together - Learning Together - Achieving Together



Contents

Page 1–2	Contents
Page 3–6	Welcome
Page 7–8	Type of School
Page 9–10	Portfield Site
Page 11–12	Communication/Curriculum
Page 13–14	Key Stages 3,4,5
Page 15–16	Curriculum Access
Page 17–18	Assessment
Page 19–20	School Meals
Page 21–22	Parent Involvement
Page 23–24	Medical Issues
Page 25–26	Annual Review
Page 27–28	Behaviour/Collective Worship
Page 29–30	General Information
Page 31–32	Announcements
Page 33–34	Welsh Language/Careers
Page 35–36	Work Experience
Page 37–38	Sports and Physical Education
Page 39–40	School Provisions
Page 41–42	Hydrotherapy Pool
Page 43–46	Support Therapists and Agencies
Page 47–48	What Parents think of Portfield School
Page 49–50	Certificates and Awards
Page 51	Useful Contacts



Portfield Special School, Haverfordwest

Introduction



Mr Damian Hewitt
Headteacher

We are very proud to welcome you to Portfield School.

Over the years we have seen our school grow in size and develop the range of facilities and services we are able to offer pupils, parents and stake holders.

We are justly proud of the achievements made by our pupils and our constant aim is to make every effort to fulfil the objectives of our mission statement and ethos.

Our Mission Statement

Working Together

Learning Together

Achieving Together

At Portfield School we strive to:

- Create a happy, safe, supportive and stimulating learning environment.
- Value everyone.
- Develop everyone's personal, social, emotional health and wellbeing.
- Promote relevant academic and vocational skills.
- Meet individual needs through an imaginative and flexible approach.
- Enable all learners to achieve their full potential.





Vision, Aims and Values

- To encourage and enable pupils to make exceptional progress in their learning.
- To develop a community where pupils, staff and parents/carers learn and work together.
- To encourage our children and young people to recognise that we are all unique and need to accept each other for who we are.
- To encourage co-operation with each other and to be sensitive to each other.
- To provide a curriculum that is broad and balanced whilst taking account of the specific needs of pupils and young people
- To create a happy, organised and stimulating working environment where we show respect for each other.
- All staff and governors work together as a team providing good role models to the school community.
- To encourage all parents/carers to take an active part in their children's education and development.



Type of School

Portfield School is a special school for pupils aged 3–19 years located in Haverfordwest, Pembrokeshire with pupils taught through the medium of English. We also have two satellite centres: Y Porth based at Ysgol y Preseli in Crymych where pupils are taught through the medium of Welsh and at Haverfordwest High VC School which is English medium. We provide excellent learning opportunities and services for our pupils who have a range of abilities and needs including moderate, severe, profound and multiple additional needs, autism spectrum condition and pupils with social, emotional and behavioural needs. We celebrate every

pupil's individuality, personalise the curriculum to meet their needs and support and celebrate every success.

School Organisation

Leadership Team

Portfield School is led by Headteacher Mr Damian Hewitt with Mrs Eli Wapner Carter our Deputy Headteacher. The school also has an Assistant Headteacher, Mrs Alexis George.

Governing Body

The Governing Body has the collective and legal responsibility for the overall direction of the school and its strategic management. This includes the effective financial management of the school's delegated budget and the responsibility for ensuring that the school's financial resources are utilised in support of improving learner outcomes in the most effective and efficient way.



Portfield School Site

- This site comprises two buildings, one for Foundation Phase and Key Stage 2, a secondary building for Key Stages 3, 4 and our Sixth Form. We have 14 classes where pupils are grouped by individual needs. Classes typically are smaller than in mainstream ranging from 6 to 10 pupils in primary and 8 to 14 in secondary. Each class is supported by a team including a teacher, senior learning support assistant and a number of learning support assistants.
- The site has a wide range of resources including sensory rooms, medical and physiotherapy rooms, a hydrotherapy pool, cookery rooms and a variety of outdoor areas.

Haverfordwest High VC School Site

There are two classes on this site for Key Stages 3 and 4 and individualised inclusion programs with the mainstream classes are developed for these pupils.

Y Porth

This Welsh medium site caters for secondary pupils in key stages 3 to 5 and individual inclusion programs with Ysgol y Preseli are developed for these pupils.

Admissions

- The Local Authority Inclusion Panel makes the final decision on placement of pupils and will inform parents and school of the admission date.
- Parents and children are invited to meet staff and look around the school prior to application for a place and to discuss the needs of the child and the provision available at Portfield.
- All pupils are assessed by Educational Psychologists and admission to Portfield School is regulated between the school, all services involved with the child, the Local Authority and the parents/careers/guardians. All pupils attending Portfield School will have a Statement of Special Educational Needs or equivalent.



Communication

- At Portfield School we encourage use of a range of methods of communication, selecting appropriate methods for pupils individual needs in consultation with the Speech and Language Therapist (SALT).
- Many of our pupils communicate through speech, some use sign or body signing and we offer regular Signalong training for staff and parents.
- Some pupils use PECS—Picture Exchange Communication System, which involves the use of a growing number of syllables to represent items enabling the child to ask for things they need or want. PECS can be used alongside emerging speech to support the child's communication.
- We use Objects of Reference (OOR) with some pupils where a limited number of objects are used to symbolise or provide a cue for the child for specific activities or places they need to go to. These help the pupil to develop some early anticipation of what is coming next in their day.
- As technology is advancing so the range of different devices and software used to support communication is being developed. We work with parents and speech and language therapists to identify where it is appropriate to support communication with a device and select the most appropriate software for the needs of the individual child.
- We will regularly meet with parents to discuss the effectiveness of a child's communication and any additional support needed to ensure the child can communicate effectively in all aspects of their life and to ensure systems established in school are appropriate and can also be maintained out of school.



Curriculum

- At Portfield School we are committed to providing an exciting, relevant and appropriately challenging curriculum adapted to meet the needs of each and every pupil.
- The curriculum aims to be meaningful and relevant to the needs of our pupils and to ensure that statutory requirements are fulfilled. Our curriculum is flexible and meets the changing needs of our pupils in their everyday life.
- In line with national initiatives to create a new curriculum for Wales, our curriculum is reviewed and updated to ensure it is relevant and appropriate in a modern technical world.
- All of our pupils will experience a broad and balanced curriculum, but as our pupils have very different needs some pupils will experience more aspects of the curriculum than others.
- Every pupil will access a curriculum appropriate for each different stage of their school life. In Foundation Phase pupils will access learning through a mixture of play and adult led activities in the different learning zones. Communication is a major focus through all activities at this stage.
- We plan broad themes where pupils can progress, learn to develop and apply knowledge and understanding and become independent, sociable, flexible and creative at their own level.
- In Key Stage 2 pupils continue to develop skills with increasing independence across all areas of the curriculum.

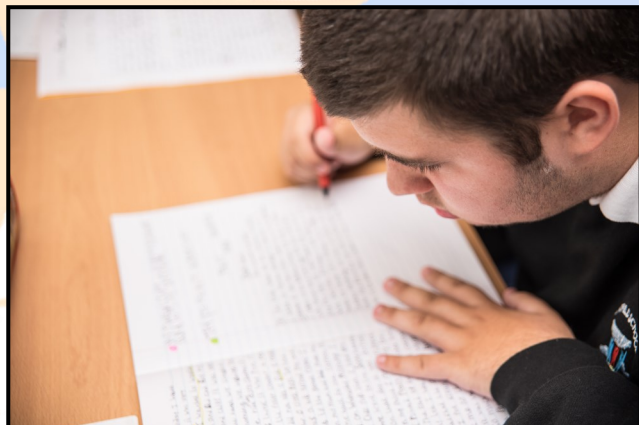


Secondary School Age Key Stage 3, 4 and 5

- At secondary age, Key Stages 3, 4 and 5, pupils' learning develops and includes pathways to vocational, careers and work experience and community service placements.
- Strong links have been developed across Pembrokeshire and our pupils participate with others in learning at Haverfordwest High, Ysgol y Preseli, Pembrokeshire College, Frame and social activity centres with opportunities to gain further nationally accredited vocational qualifications.
- Learning opportunities are enhanced and independence promoted through careful differentiation and use of visual supports.
- Extensive use is made of the rich environment around the school for outdoor education across all key stages.
- All learning is planned by teams of staff who have relevant training and experience to meet the differing needs of the pupils.
- At Portfield we benefit from additional support for planning to meet children's needs including speech and language therapists, physiotherapists, occupational therapists, educational psychologist and advisory teachers.
- Pupils have varied opportunities to take skills and learning from the classroom out into the community through educational visits, working in the school charity shop, running the tuck shop, being a member of the School Council, Tech-Team, Eco-Committee, and Duke of Edinburgh Awards.
- The curriculum is monitored by various means including reports and analysis from curriculum coordinators, classroom observations, work scrutiny, pupils' views, parental consultation and moderation of work.



- The curriculum is further supported and enhanced with a number of interventions to ensure the well-being of all pupils, including the use of sensory rooms, physiotherapy, rebound therapy, Riding for the Disabled, Whizz Kidz for wheelchair users, hydrotherapy, School Counsellor, Youth Club and school councils and committees.
- We participate in the annual Shakespeare for Schools programme and our pupils rehearse then perform a show version of a Shakespeare play at the Torch Theatre. This provides pupils with an ongoing opportunity to develop skills, communication, confidence, performing skills, costume and set design, production and marketing/sales. They thoroughly enjoy the show and have great fun meeting other performers and artists from various schools and organisations.





Curriculum Access

- Our pupils have a variety of abilities and needs, some of which are very complex. We provide a range of additional supports to ensure every pupil can access a rich curriculum, achieve measurable success and be fulfilled.
- We regularly review not just the curriculum but also the different teaching approaches used and physical environment to ensure that we are facilitating an effective and enjoyable education for all our pupils.

To deliver this we provide:

- an environment which is calm, safe, engaging and well ordered;
- a total communication philosophy including the use of Sign, PECS, symbols, speech, Objects of Reference, body signs, assisted and augmented communication devices including tablets, iPads, iPods and switches in practical situations;
- regular opportunities for collaboration between parents, other professionals and agencies and the wider community;
- training for all staff in the use of strategies including the TEACCH approach to give pupils visual supports for independence, routine, sensory experiences and use of technology to enhance learning and facilitate accessibility to the curriculum;
- a consistent approach across the school to positive management of behaviour and support for the pupils staff and parents;
- consistent use of therapies to support pupils including SALT, physiotherapy, occupational therapy, hydrotherapy and Touch and Communication Pad (TAC PAC);
- appropriate use of aids and devices to support mobility and positional care;
- appropriate technology to support visual, hearing and sensory difficulties.



Assessment Recording and Reporting

- Assessment, recording and reporting are integral components of our teaching, learning and curriculum.
- Pupil progress is carefully assessed and monitored throughout the year and this informs future planning to ensure pupils’ learning progression.
- Summative and formative assessments are conducted, and achievements kept to evidence individual pupil’s progress, whole school progress and to guide future learning.
- Pupils are actively involved in planning and in the assessment of their own work where appropriate. We encourage pupils to express their views about their targets and achievements and to discuss appropriate future learning.
- All pupils have termly Individual Education Plans (IEPs) which are developed with parents to set appropriate targets for the term.

- Parents are invited to termly coffee mornings where they have a chance to meet the staff and visit their child’s classroom. We also offer parents the chance to meet with their child’s teacher and their child’s annual review meeting once a year to discuss their child’s progress and targets.
- Pupil’s skills are baselined within six weeks of admission and progress rewarded continually throughout their school life.
- Annual targets are broken down into termly IEP targets with appropriate priorities developed for each pupil to develop skills across all aspects of the curriculum.

Information from assessment records is used to:

- plan appropriate learning experiences and develop short term targets;
- review the impact of initiatives, interventions and learning to inform our curriculum plans and policy;
- provide data for analysis to develop whole-school targets and development.



School Meals

- School meals are cooked on the premises daily and copies of the menu are available on the school website. Pupils are invited to make their choice daily.
- Some pupils are eligible for free school meals – please ask if you are unsure.
- Special dietary requirements can be catered for, please ask.
- The cost of school meals for infant, junior and secondary pupils can be found on the website: <https://portfield-special-school.j2bloggy.com/>. All payments for school meals are made online through Pembrokeshire County Council.



Transport

- We have 3 minibuses available to transport pupils to sports and swimming activities, work experience and educational visits off site.
- All staff driving minibuses have completed the Local Authority MIDAS driving test and are reassessed on a regular basis to ensure safety.

Parent Involvement

- At Portfield we have an 'open door' policy and value and welcome discussion with parents and carers on all aspects of school life. Parents are welcome to phone at any time to make an appointment and discuss any concerns.
- We aim to work as partners with parents to maximise pupil learning, progression and enjoyment of school and prepare them for important transitions at different phases of school life.
- We hold termly coffee mornings for parents and they are able upon request to meet to discuss targets for the children's Individual Education Plan to ensure we work together to support the children.
- We send Home School books daily between home and school where parents and teachers can exchange, review and supply information.
- We are happy to arrange meetings with other professionals when required.
- We consult with parents on a range of school, local and national issues and offer a range of parent workshops on behaviour support, sex and relationship education, online safety, technology and signing.
- We welcome parents into school to participate in and celebrate special events and achievements throughout the year.

Friends of Portfield School (FOPS)

- We are extremely fortunate to be supported by an enthusiastic and committed group of parents and friends who enthusiastically plan, organise and run a range of events throughout the year. The events provide invaluable support to other parents and pupils. Funds raised enable us to provide equipment and resources to better meet the pupils' needs. We are indebted to this wonderful group and enjoy working together to support the school. If you would like to volunteer or would like to receive more information about FOPS please contact the school. New recruits are always welcome!



Medication

- We follow strict guidance from the Welsh Government, Local Authority, and health services on how we store, administer and hand over medication. Medication can only be administered with consent and following these guidelines. (To see our full Administration of Medication Policy please visit our website.)
- All pupils have an individual Health Care Plan in which individual medical support and medication is recorded. These plans are followed at all times. Parents should inform the school in writing if amendments are needed.
- If pupils require additional and/or temporary prescribed medication the school will ask parents to request from their GP medicines that can be administered out of school hours whenever possible.
- All medication should be handed to an adult, (driver, escort or teacher) and never be placed in pupil's school bags. Medication should be in the original container clearly labelled with the pupils name, details of dosage and time and frequency of administration. Parents should inform the school of the time the last dose was given and any other relevant information from the medical practitioner responsible for prescribing it.
- All drugs and medicines will be recorded and stored in a locked medication cabinet.

Medical Issues

- If there are any medical issues in school we would inform parents/carers.
- We have on-site support from the Community Children's Nurse, physiotherapist, occupational therapist and also have contact with school nurse, paediatrician, orthoptist and seating specialist. Onsite therapists and healthcare professionals provide regular support, advice and care for the pupils and training for the staff.



Statement of Educational Need and Annual Review

- All pupils at Portfield have a Statement of Special Educational Need or equivalent which identifies their individual needs and how they should be met.
- This statement is developed following assessment and discussions between parents and all agencies, services and placement for each child.
- It is a legal requirement that every child has an annual review of this statement each year.
- This typically involves the child, school and agencies involved with the child meeting to discuss a report on the child’s progression over the last year. The child’s own views on how they have progressed and what they might like to do in the future are presented/ discussed and future provision agreed.
- We are totally committed to a Person–Centred Planning (PCP) approach whereby, whenever possible, the pupils air views on their success and future targets. This then informs planning for the year ahead.
- All attending the review meeting have an opportunity to contribute and ask questions. an action plan for the coming year will then be agreed.
- When pupils reach Year 9 we begin the process of Transition Reviews where we work with pupils, parents and the careers service to begin to develop a plan for the pupil for their ongoing education and towards independence in life.
- The action plan from the annual review is used to generate targets and termly IEPs.
- In response to the new Additional Learning Needs Bill that has been passed by the Welsh Assembly the school has been piloting the introduction of Individual Development Plans (IDP) for a number of our pupils. This process will be increasing used for our pupils in the coming year as we move over from annual reviews to agreeing the IDP for the next twelve months.

Equal Opportunities

- At Portfield we celebrate the diversity of our school and community. We aim to provide equality and opportunity for all our pupils whatever their ability, background or gender.
- Our equal opportunities policy is available on the school website or on request.



Supporting Positive Behaviour

- Central to supporting pupils who exhibit behaviours described as ‘challenging’ is the development of positive relationships between pupils, parents and staff based on trust, respect and clear boundaries. We strive to develop effective, positive working relationships with pupils and their families, working together to plan a way forward.
- Some pupils struggle to deal with situations they find difficult. At Portfield we have a whole school ethos of positive support for pupils, their families and class teams.
- Every member of staff is trained in Team Teach by our accredited trainers and this provides excellent techniques for de-escalation and safe support for behaviour issues.
- We develop behaviour support plans where appropriate and agree with the child, family and staff effective use of strategies to positively impact on behaviour.
- We have whole school, whole class and individualised reward systems which the pupils are actively engaged in developing.
- We use restorative approaches to resolve difficulties and plan with the child how to use strategies to better manage future difficulties and develop greater self-management of behaviour.
- Where appropriate other agencies and services may support children and their families.
- We offer regular behaviour workshops for parents and carers as we believe it is essential that we work together to support the children.



Religious Education and Collective Worship

- Religious Education is a compulsory subject in all schools in Wales and is a part of the whole curriculum delivered in accordance with the school RE Scheme of Work as guided by Pembrokeshire agreed syllabus. Parents have the right to withdraw their child from daily collective worship.
- Major festivals and themes are celebrated and pupils are encouraged to explore and have respect for the beliefs of others.
- Daily collective worship fosters a sense of belonging within the school and weekly celebrations of achievement celebrate individual success and development and help to build self-esteem and shared values.



General Information

Uniform

- At Portfield School we encourage all pupils to wear uniform and to have appropriate PE kit for Physical Education. Our uniform is slightly different on our different sites.



Portfield Site



Haverfordwest High Site



Y Porth Site

- Details for purchase of uniform are available from reception or from our website:
<https://portfield-special-school.j2bloggy.com/>

School Transport

- The majority of our pupils travel to school in minibuses or taxis arranged by the Local Authority. This transport has escorts which are provided to supervise and care for the children. Transport is arranged so that pupils will arrive between 8.45 and 9.00am and leave between 3.15 and 3.30pm.
- Some pupils are transported to and from school by parents and some, living nearby, walk to school.
- Parents can contact the Local Authority transport department if there are any issues. Please also inform school of any concerns.

Adverse Weather Conditions School Emergency Plan:

- Due to the significant distances some of our pupils travel daily, predicted adverse weather may result in closure or early closure of the school and pupils will be sent home. Transport will be rearranged if school needs to close early.
- Parents will be informed through the SCHOOP app that the school uses for communication with parents. The school will contact parents by phone if necessary. Please ensure we have current phone numbers available at all times.
- Parents can also log onto the Pembrokeshire County Council website at www.pembrokeshire.gov.uk for up-to-date information on school closures. This should be the first place that parents check if the school is to close or is closed.

Attendance

- At Portfield we strive to support excellent attendance as pupils will succeed better educationally, emotionally and physically, when attendance at school is maximised, .
- We understand that there are special circumstances for some pupils where we will work with the Local Authority to support the best possible attendance in times of poor health or difficult circumstances.
- There is a legal responsibility for parents of registered school age children to ensure their child attends and for the school to report attendance to Welsh Government.
- Our school attendance target is 93.5% and we are always happy to discuss with parents how we can support the highest attendance possible.
- If your child is unwell or absent for any reason please inform the school of the reason why on the very first day of absence.
- Parents will receive information on pupil attendance in individual pupil reports and on the school newsletter.
- Parents are asked to take family holidays during the school holiday periods and not during term time.
- Term dates can be found on the school and Pembrokeshire County Council websites.
- Parents can request and submit a form for special leave of absence.





Communication with Parents and Carers Announcements

- Our newsletters are sent out to parents via our Class Dojo app and are posted on our school website <https://portfield-special-school.j2bloggy.com/> . This contains a wide range of information on up and coming events and general news about the school.
- Lots of information on all aspects of school life and policies can also be found on our website.
- Our school social media page also has information for parents and can be found on Facebook: www.facebook.com/portfield-school-haverfordwest-510653852447864

Charging and Remissions

- We strive to ensure we have a relevant and exciting curriculum for all our pupils including visits to local events and activities. Whilst we do not include a charge for these activities we are very grateful for voluntary donations as they help enable future participation. All children will be included in all activities regardless of financial contribution.
- Parents are asked to contribute towards the weekly costs classroom activities such as cookery and provision of snacks.
- Parents are also asked to contribute to the costs of a residential visits that the pupils make with the school.

Complaints

- The school's Governing Body has adopted a complaints procedure which covers complaints related to school, curriculum and other related matters.
- A copy of this procedure is available on the school website.
- We do strongly encourage any concern or complaint to be raised early with the child's class teacher and head teacher as most issues can be quickly and happily resolved.



- Learning of Welsh as a second language is embedded across the curriculum, through curriculum Cymreig and pupils participate in learning about their Welsh culture, heritage and traditions through music, dance, story, educational visits, visitors to school, performance art and annual participation in the Urdd and Welsh Heritage School Initiatives.
- Pupils learn about their place in the local and wider community of Wales and the world.
- At KS3 MFL learning is developed in the same way, with pupils developing and understanding the language and culture of France.

Careers and the World of Work

- At Portfield we begin to prepare pupils for their future career in work or education as soon as they first set foot in school. We work to develop independence, problem-solving and critical thinking skills in order to prepare them for the day they leave Portfield.
- We work with Careers Wales, local enterprises and businesses to provide work-related opportunities to develop an appreciation of learning and encourage a drive to continue lifelong learning.
- Careers and the world of work form a big part of our secondary curriculum and are integrated into our Sixth Form provision of 14–19 learning pathways.

Welsh Language and Curriculum Cymreig and Modern Foreign Languages

- Portfield School is a school in Wales and we are proud to celebrate our Welsh language and culture in a wide range of ways.
- On our Y Porth site pupils are taught through the medium of Welsh in a number of subjects.
- On all our sites we have an ethos of celebrating our Welsh heritage and all pupils will experience and learn incidental Welsh language throughout the day, relevant to the skills and abilities they have.
- All pupils and staff are encouraged to experiment with spoken Welsh and, in Key Stage 3, with a modern foreign language.

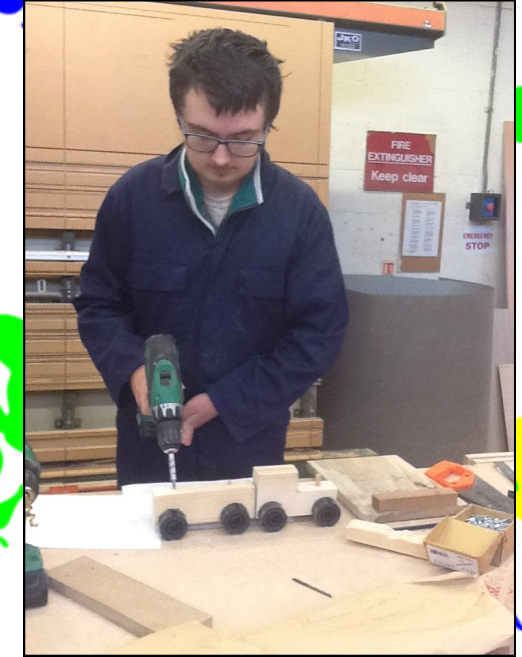


Work Experience

- Pupils in Portfield have opportunities for work experience at a variety of establishments including Albany Church, Holly House, Norman Industries , Buddies Café, Frame and at our school charity shop Trysorau.

Links with the Community

- Portfield School sits firmly within the local community and develops and maintains many links across all sectors of the community.
- Pupils visit sites of interest in the local area for study and to access amenities including the Haverfordwest Leisure Centre, local shops, bike mobility, theme parks, museums and businesses.
- Pupils help to run our charity shop 'Trysorau' and work alongside parents, friends and volunteers to prepare and display items and welcome and serve customers.
- Pupils regularly participate in local community events such as ceremonies, local sports competitions and carol singing at local residential facilities and in the town.
- We welcome members of the local community to join us for our Christmas shows, carol services, Winter bazaar, and summer family fun days as well as for fundraising events such as bingo and quiz nights.
- We have excellent links with a number of local groups who come to work with our pupils in school including choirs, disability sport clubs, artists, musicians and pet therapy workers.
- Pupils develop an understanding of the importance of working with others in preparation for transition to college or work placements.



Sports and Physical Education

- All pupils at Portfield have access to a wide range of activities and experiences to promote physical development and wellbeing as we believe this promotes independence, positive attitudes and self-confidence.
- All pupils participate in appropriate physical activities and require the appropriate clothing and footwear and also swimwear for weekly sessions either in our hydro pool or at the local Leisure Centre.
- Pupils participate in different activities at different stages of their school life and according to their individual needs. These may include football, cricket, rugby, wheel chair basket ball, swimming, dance, sensory, circuits, yoga, boccia, gymnastics, new age curling, use of our outdoor gym and the Duke of Edinburgh Award scheme.
- Where appropriate, some pupils go horse riding with the Riding for the Disabled Association at Bowlings Riding Stables where they learn to care for the horses as well as ride them.
- We actively participate in sports events and competitions both locally and nationally and teams enter in football, boccia, gymnastics and swimming competitions, regularly reaching the gymnastics finals in Cardiff.
- Our annual sports days are enjoyed by all pupils and are well supported by Disability Sports Wales. The parents' races are typically quite competitive too!
- We have a very active Duke of Edinburgh programme and pupils hike, camp and complete challenges to earn their bronze, silver and they have received their gold awards with pride at St James' Palace.



Safeguarding

- At Portfield School, the safety and wellbeing of all pupils is everyone's responsibility. Our designated Child Protection Officers regularly review policy and procedures with all staff ensuring that staff are trained and offering support and guidance to parents and staff.
- Our safeguarding policy is available on the website and on request.
- The health and safety of pupils, staff and visitors is a high priority. We have a secure site ensuring doors and gates are secured at all times. Visitors must report to reception at each of our sites, sign in and receive visitor badges. They are then escorted to meetings.
- All staff wear identity badges, and other professionals, agency staff and transport staff, are required to show their identification.
- CCTV operates in the car park and some public areas of the school.
- Detailed risk assessments are written for all off-site activities in line with Local Authority guidance to ensure the safety of children, staff and volunteers at all times.



Pupil Participation Provision

School Council

- Portfield has a well established School Council with representatives voted into office by their peers, to represent the pupil voice.
- School Council members are nominated and voted for in a secret ballot and the council is led by the Head Boy and Head Girl who are also elected by their peers.
- The School Council meet regularly to raise ideas and issues from across the school and actively leads initiatives to raise funds for UNICEF, Children in Need and Red Nose Day .

Eco Schools

- Our very active Eco-Schools Committee leads awareness of conservation with regard to water, school grounds, healthy living, recycling, transport and global citizenship by planning and organising activities throughout the year to focus on these issues.
- We hold very successful 'No Electricity' days and actively recycle wherever possible. Litter picking groups also support local environmental initiatives.

Tech Team

- Portfield has established an Online Safety Council called the Tech Team. These pupils lead, support and implement projects on online safety and digital competency across the school and were finalists in the Safer Internet Day logo competition, receiving their award at the Senedd in 2017.

Tuck Shop

- Pupils run the school tuck shop thus having the opportunity for work experience, planning what to sell, developing awareness of healthy snacks, and working on money management and banking skills development.

Enterprise Activities

- Portfield School offers a chance for pupils to participate in the Annual School Enterprise Fayre in Haverfordwest. This involves them in planning the purchase of resources and selling a range of flowers and plants. This supports the development of financial skills such as budgeting and buying.

Bike Mobility

- Pupils from all ages and abilities can access bike mobility sessions at Withybush showground where pupils have fun exercising but also have the opportunity to learn and practice many skills and concepts including communication skills, maths and social skills and road safety.

Youth Club

- On Monday evenings our Youth Club is open from 3.30–5.30pm. Pupils can attend and participate in a wide range of activities with their friends supported by staff who are trained and experienced in meeting their needs. Activities include crafts, balloon modelling, pet party, film shows and sports.



Hydrotherapy Pool

Hydrotherapy involves exercise in warm water to improve movement, provide relaxation, strengthen muscles and reduce pain and stiffness.

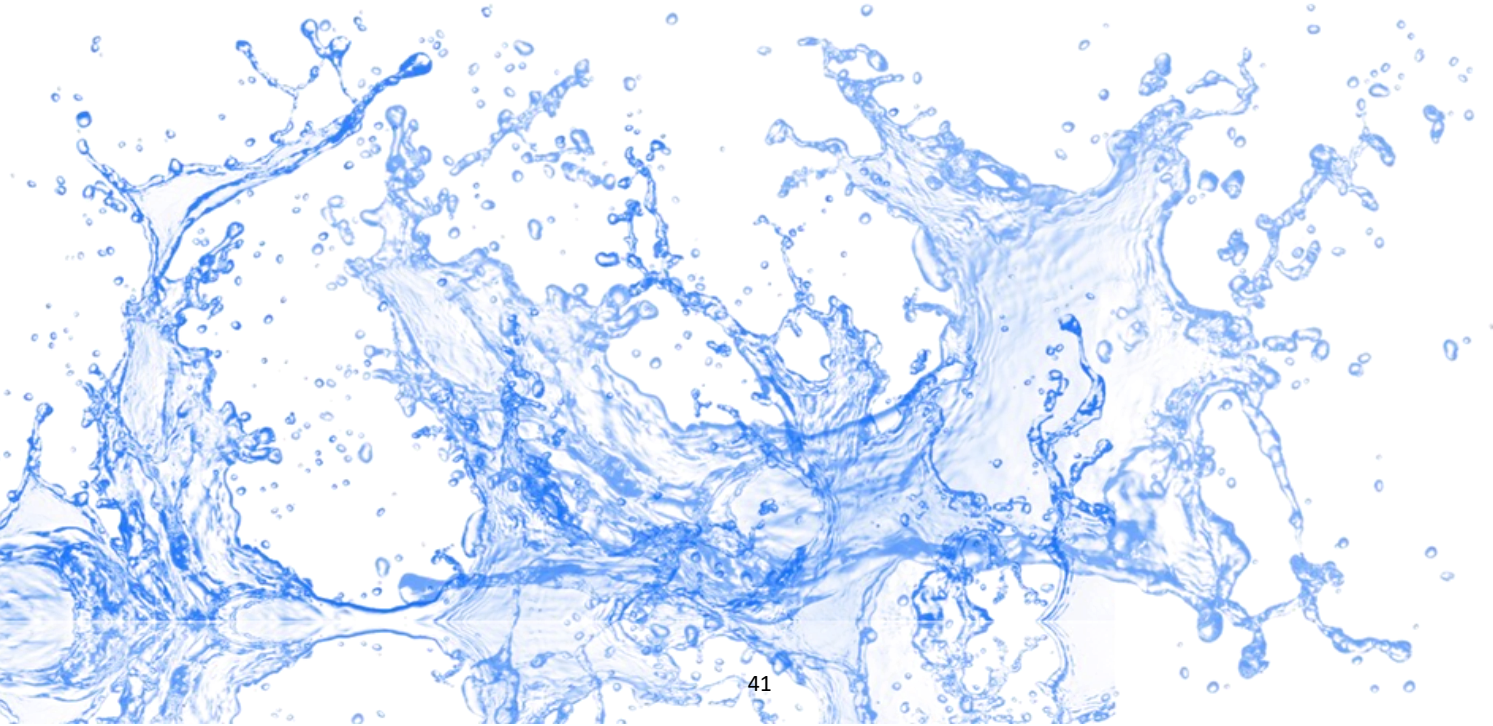
The warmth and buoyancy of the water relaxes muscles enabling a wider range of movement improving general fitness and wellbeing.

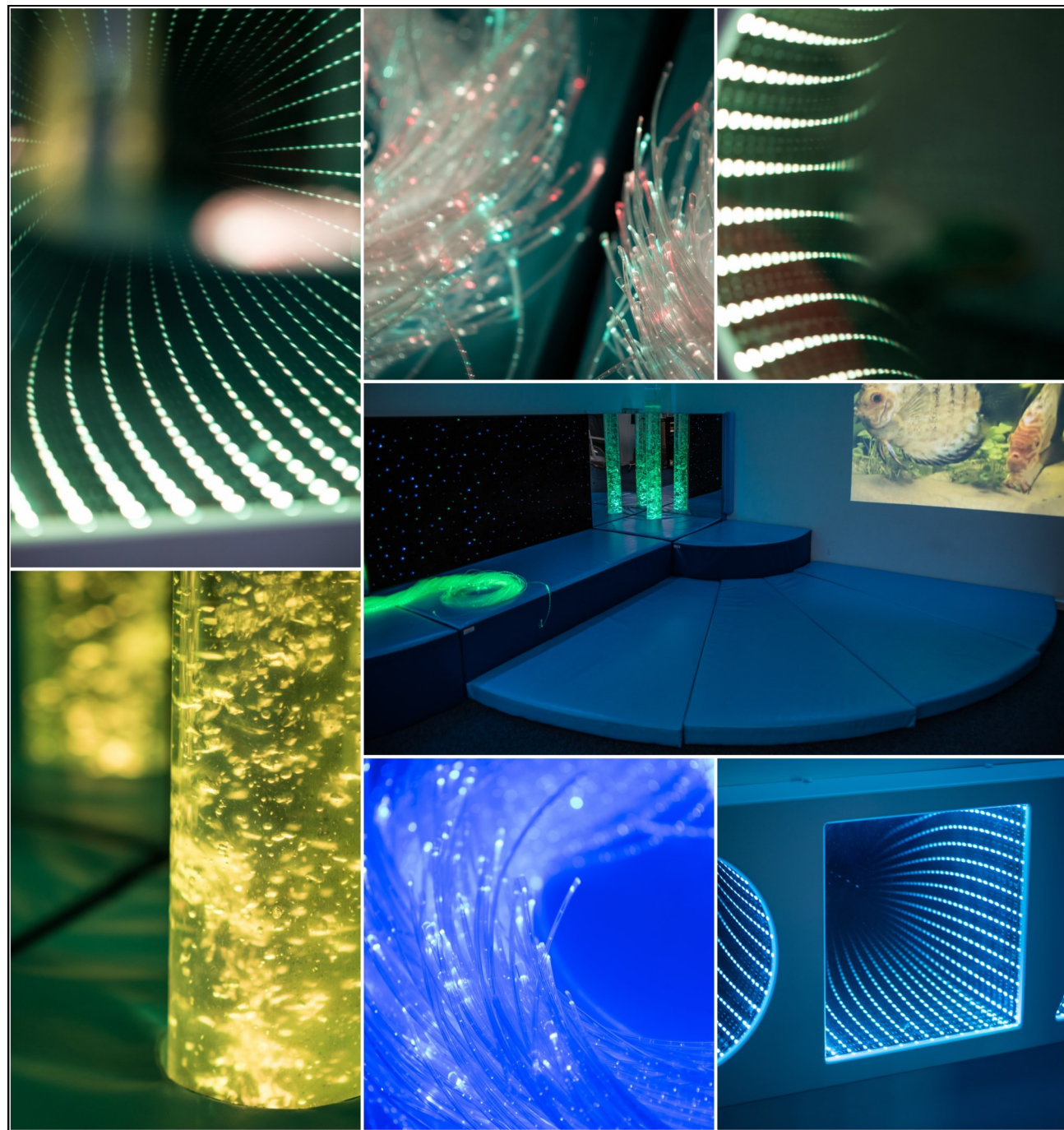
Our trained staff develop individualised programmes to meet the varied needs of our pupils.

Technology can be used to enhance the pool experience and enable pupils to make choices to control their environment using a range of switches to control lights, music and bubbles in the water.

Hydrotherapy can help to:

- 1. Relieve pain and muscle spasm.
- 2. Ease movement.
- 3. Reduce swelling and improve circulation.
- 4. Strengthen weak muscles.
- 5. Promote relaxation and wellbeing.
- 6. Enhance cardiovascular fitness.





Support Therapists and External Agencies

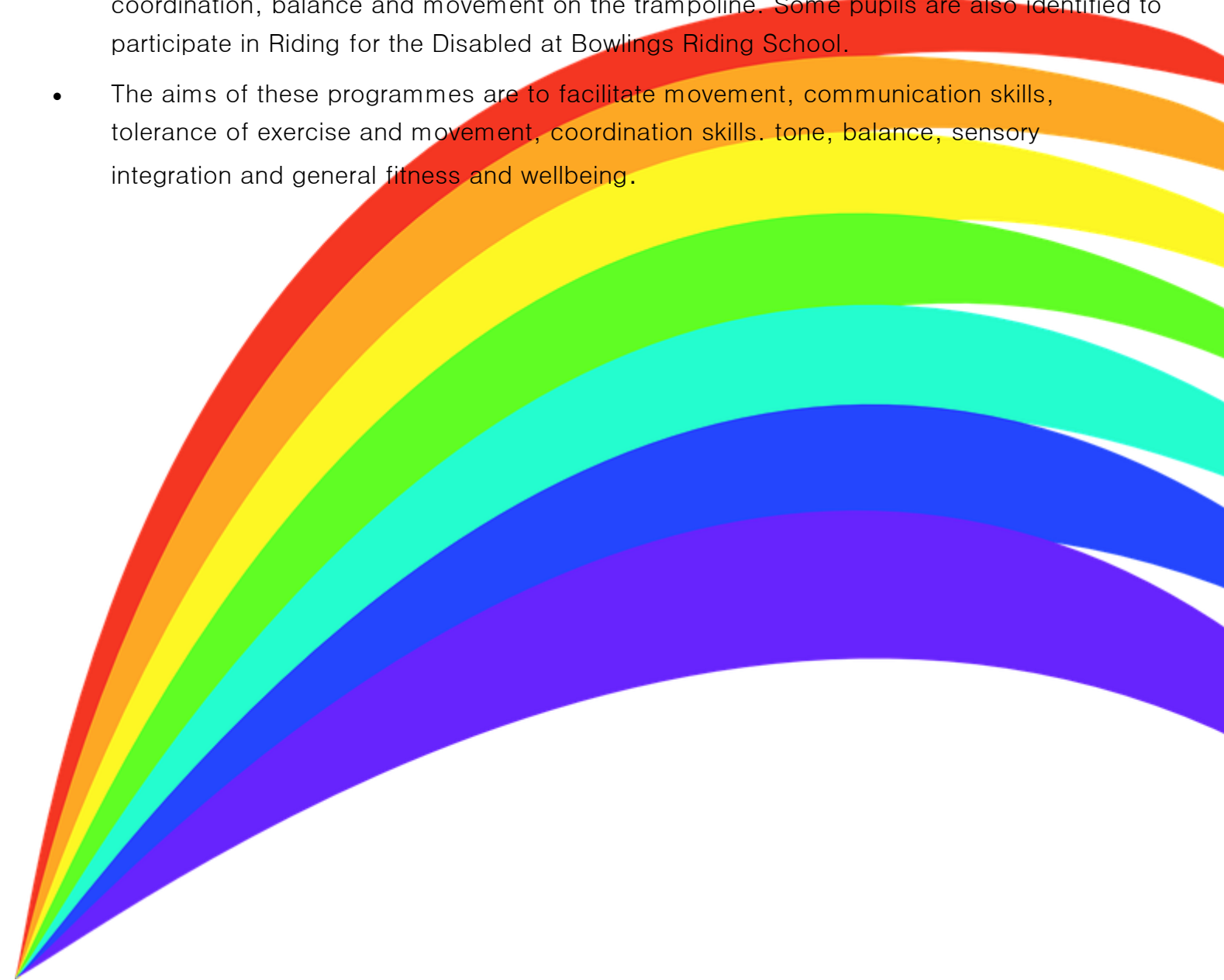
- At Portfield School we consider excellent multi-agency working to be an essential factor in ensuring our pupils succeed and are able to participate fully in all aspects of school and home life. We work in partnership with parents and a number of agencies including:

Speech and Language Therapy

- Pupils are assessed by speech and language therapists and advice is given to teachers and class staff for targets and progression appropriate to individual needs. A speech therapy assistant supports pupils and class staff in implementing these programmes.
- Pupils who have limited communication are encouraged to make choices or communicate their needs and wishes through the use of Objects of Reference, signs, Picture Exchange Communication System (PECS) and digital communication aids.

Physiotherapy

- The physiotherapist assesses and reviews pupils as appropriate and develops individual programs of support.
- The physio assistant and class staff encourage pupils to work through daily routines and, where appropriate, some pupils are supported to undertake Rebound Therapy to develop coordination, balance and movement on the trampoline. Some pupils are also identified to participate in Riding for the Disabled at Bowlings Riding School.
- The aims of these programmes are to facilitate movement, communication skills, tolerance of exercise and movement, coordination skills, tone, balance, sensory integration and general fitness and wellbeing.



Occupational Therapy

- The occupational therapist spends one day a week at school working closely with the physiotherapy team to ensure all sensory needs are provided for.

Hearing/Visual Impairment Advisory Team

- Staff from this team visit school to discuss individual pupils’ needs and to ensure the physical environment and approach to tasks meets the needs of hearing/visual impaired pupils and enables them to access and participate in the curriculum fully.

Health

- The Community Children’s Nurse for complex needs supports specific pupils on site who have complex medical needs and support training for staff to be skilled in meeting pupils varied medical needs. The school has a designated school nurse who supports the rest of our pupils.
- The NHS paediatrician holds regular clinics at school, meeting with parents and pupils to review their medical needs.

Educational Psychology

- The school’s allocated educational psychologist meets with staff each term to review the needs of pupils, advise on strategies and support and work with senior staff to provide training and support for parents.

Social Services

- At Portfield School we work very closely with colleagues from Social Services as appropriate, particularly supporting pupils and families to access support including respite and with other issues.

School Counsellor

- Our School Counsellor is on site one day each week and pupils are able to request time with the counsellor for support.





What Parents and Carers think about activities run by Portfield School?

These sessions are fantastic. It's fantastic to speak with other parents and share coping strategies. The information given, gives a lot of food for thought. It's good to talk.

Useful sessions, strategies for changing behaviour in small graduated steps.

Very interesting and helpful. Very well structured.

Thank you – This was such a wonderful event. It was lovely to spend some time with my son, to celebrate mothers day with other mums.... It was lovely to just relax, special. Thank you!

School Certificates and Awards

At Portfield School we are proud to acknowledge and celebrate our pupils for ongoing achievement and successes and present certificates and awards for effort and achievement.

All pupils are given the opportunity to enter and participate in a variety of activities and competitions which often result in certificates and awards for achievements, effort or simply for taking part.

The school has also received a number of awards including:

- * Investors in People
- * Basic Skills/Quality Award
- * Healthy Schools Initiative
- * Sustainable Schools/Eco and Acorn Awards
- * NAACE (ICT Mark)
- * Welsh Heritage Schools Initiative
- * Pembrokeshire Schools Enterprise
- * Duke of Edinburgh
- * Unicef Rights, Respect, Schools
- * Active Marc Cymru
- * Association for Physical Education Award
- * Fairtrade School
- * Careers Wales Quality Mark
- * Teaching Awards – Outstanding School Team Award (2010)

