



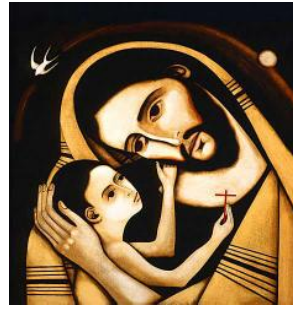
St Joseph's Catholic Primary School



Headteacher:
Mrs. Juliet Stack

☎ (01792) 842494

Fax: (01792) 843721



**Pontardawe Road
Clydach
Swansea
SA6 5NX**

Thursday February 11th

Dear Parents and Pupils,

*I hope you and your families are well and keeping safe in these difficult times. I can confirm the school will re-open on Wednesday February 24th for the Foundation Phase classes – **this will include Nursery to Year 2 classes only not Key Stage 2 pupils.***

The school will not be open for any pupils on **Monday February 22nd** as staff will have a preparation day regarding Health and Safety for the term ahead.

Foundation phase pupils will return on **Wednesday February 24th** and will need to wear their school uniform in line with school policy.

We will be aiming to • group learners together • avoiding contact between groups as much as possible • arranging classrooms with forward facing desks • staff maintaining distance from learners and other staff as much as possible. However, please be aware and accept that the risk of spreading Covid-19 in the school cannot be totally mitigated.

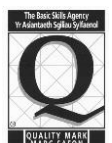
Under **no** circumstances should learners attend schools/setting if they: feel unwell, have any of the four identified COVID-19 symptoms (a new continuous cough, a high temperature or loss of taste or smell) or they have tested positive to COVID-19 in the past 7 days or live in a household with someone who has symptoms of COVID-19 or has tested positive to COVID-19 in the past 14 days.

Unfortunately we cannot provide Breakfast Club after half term.

Please see below for class start times. Wraparound for Tiny Tadpoles will be available from Wednesday February 24th please book this in advance if you wish to use this service. All children who attend the school will need a packed lunch, snack and a drink brought in a disposable bag for the first week this includes children who are entitled to Free School Meals. There will be no meals provided from the canteen. All lunches will be eaten by your child in their classroom with supervision.

E-Mail : St.Josephs.RCPrimary.School@swansea-edunet.gov.uk

School Website : <http://www.stjosephscatholicps-swansea.co.uk/>



Be aware and accept that should your child develop symptoms they will need to be collected as soon as possible from the emergency isolation room and yourself and your family will have to self-isolate for the required time as per government guidelines.

All pupils will need to be brought to school by your own transport if possible or by walking if you can– please park in Coed-Gwilym/ Church carpark and road and observe social distancing at all times. Only one parent should bring the child/ ren up the lane. **If you are too early please wait in your car and not at the school gate or top of the driveway- we need to minimise adults and pupils mixing together.** Please use the facing right hand side to walk up and hold your child's hand and observe 2 metres distancing from all other parents and pupils.

All adults need to wear face masks when picking up and dropping off their child/ ren.

Pupils who are entitled to free school transport will be contacted by County and given arrangements of transport when they are available.

Nursery – Year 2 parents will need to leave the school via the main gate and walk along the opposite side of the lane observing social distancing with other parents at all times. The same procedure will be followed at the end of the day. **No cars** will be allowed to park on the lane. Pupils will not be allowed out of the school/ setting premises unless collected by an agreed adult at the end of the session.

We strongly advise you to go straight to your transport and leave the park premises and **do** not gather on the lane on the pavement or in the park. **Please be responsible** and on time and leave immediately so we can stagger start and finish times and make safety a priority for all.

Social distancing must be maintained with adults in the setting and in the interest of safety, there will be no face to face meetings with parents/ responsible adults and no adults will be allowed into any of the school buildings. If necessary, discussions will be made over the telephone.

If you have siblings you should arrive with them at the latest time and earliest pick up time and not separately. Please be aware due health and safety of staggered start and finish times we cannot have late or early pick up times. There will be no after school clubs.

Start and finish times as follows from Wednesday February 24th

Please make sure you are not too early or late due to social distancing and allowing classes to leave the building and lane quickly

Nursery 9.00 pick up 11.30 am

Reception 8.30 am pick up 3.00 pm

Year 1 8.40 am pick up 3.10 pm

Year 2 8.50 am pick up 3.20 pm

The daily Microsoft teams meetings for Key Stage 2 classes will continue from Tuesday February 23rd with the work set daily and any questions your child may have.

E-Mail : St.Josephs.RCPrimary.School@swansea-edunet.gov.uk

School Website : <http://www.stjosephscatholicps-swansea.co.uk/>



These meetings are optional and you do not need to access them if you do not wish to. The times daily are as follows ;

Year 3/ 4 9.00 am

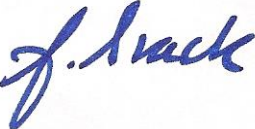
Year 5/ 6 9.30 am

They are short sessions for half an hour at most to discuss the work set. The daily work online will include; Maths / English ; RE and topic work / creative work. There is also reading eggs and Reading express. Merit Award assembly and Ten Ten Assembly will also be uploaded each week for your children to watch.

If you need to access the Key stage 2 critical workers childcare please could you contact me on **Stackj1@hwbcymru.net** to discuss what days you need by each Friday for the following week. The setting will be run by TAs 8.50- 3.20pm. Please email me if you need this service for the week of February 23rd by tomorrow please.

Numbers are limited and this should be used if you have only exhausted all other childcare opportunities and as a last resort. This should not be used just because you have younger children at school.

Kind regards



Mrs. Juliet Stack

E-Mail : St.Josephs.RCPrimary.School@swansea-edunet.gov.uk

School Website : <http://www.stjosephscatholicps-swansea.co.uk/>

