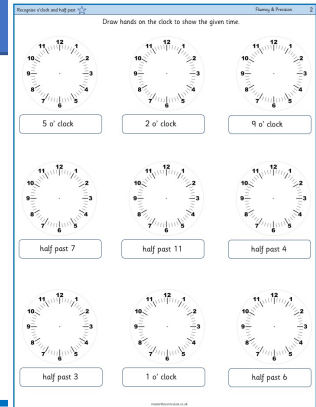


★ Recognise o'clock and half past

Children continue recapping o'clock and half past by drawing hands on a clock face.

Children on this sheet will have a row of o'clock times where they can concentrate and consolidate o'clock. They then move on to half past times to consolidate, before moving on to a mixed row of half past and o'clock.

masterthecurriculum.co.uk

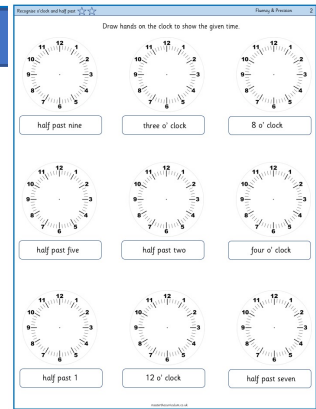


★★ Recognise o'clock and half past

Children continue recapping o'clock and half past by drawing hands on a clock face.

Children on this sheet have a mix of half past and o'clock times.

masterthecurriculum.co.uk

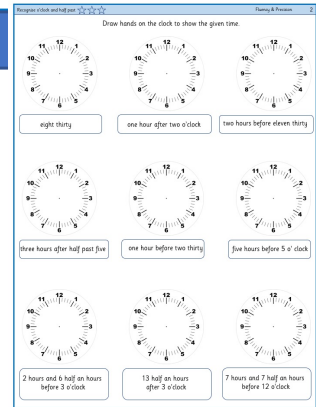


★★★ Recognise o'clock and half past

Children continue recapping o'clock and half past by drawing hands on a clock face.

Children on this sheet have instructions to draw the hands on a clock after the given hours/ minutes of a time shown.

masterthecurriculum.co.uk



Reasoning & Problem Solving

Recognise o'clock and half past

Children continue to show their understanding of telling the time by answering reasoning tasks.

Recognise o'clock and half past

Malachi has drawn hands on the clock for half past 5.

Can you explain the mistake he has made?

half past 5

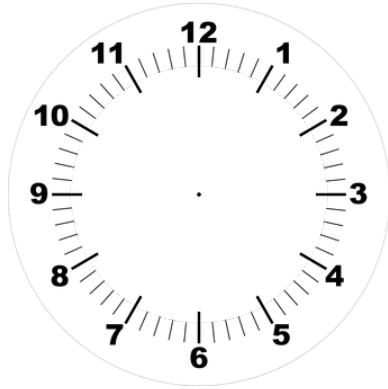
Reasoning & Problem Solving

Esin has drawn hands on the clock for 9 o'clock.

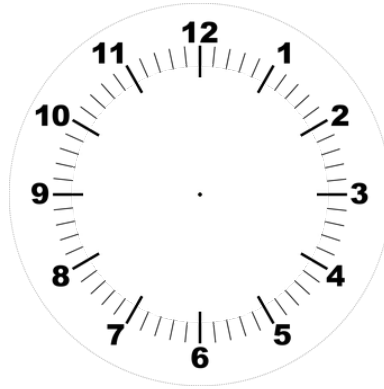
Spot the mistake.

9 o'clock

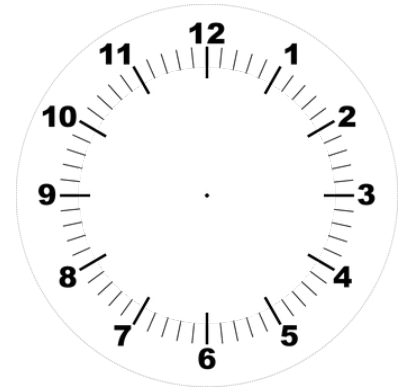
Draw hands on the clock to show the given time.



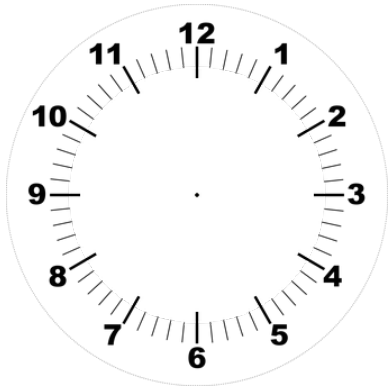
5 o' clock



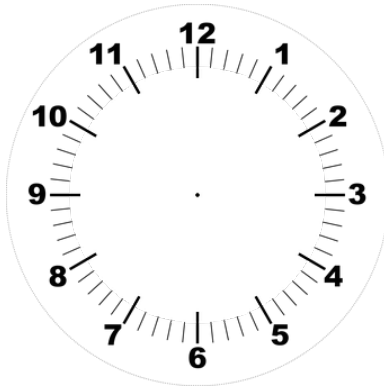
2 o' clock



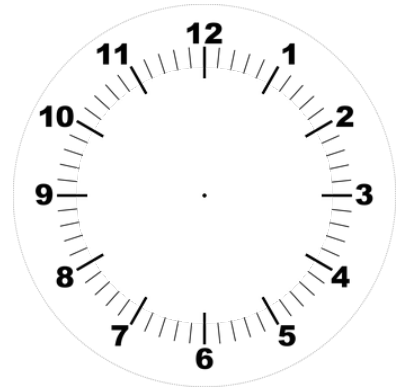
9 o' clock



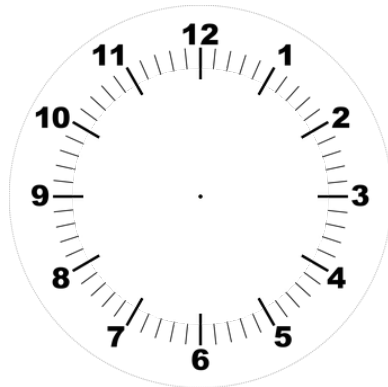
half past 7



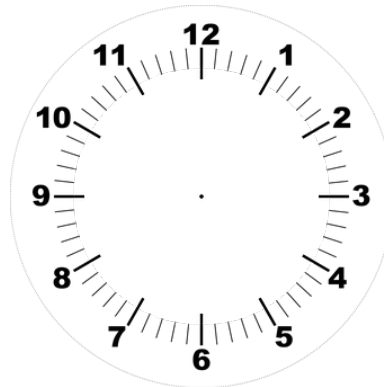
half past 11



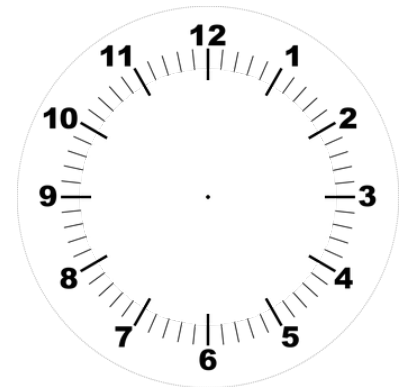
half past 4



half past 3

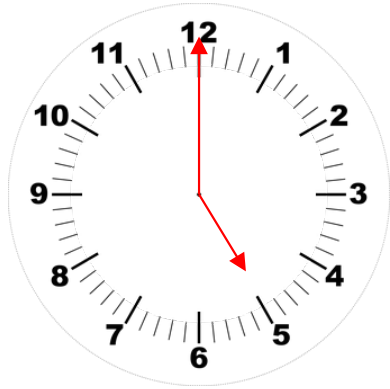


1 o' clock

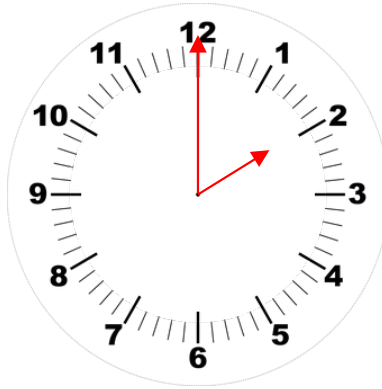


half past 6

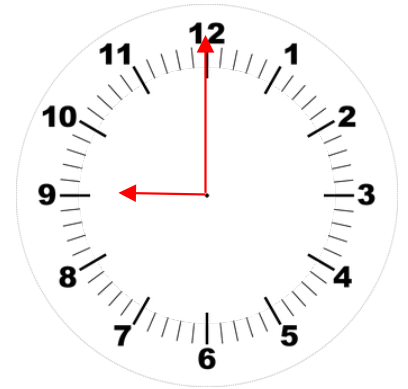
Draw hands on the clock to show the given time.



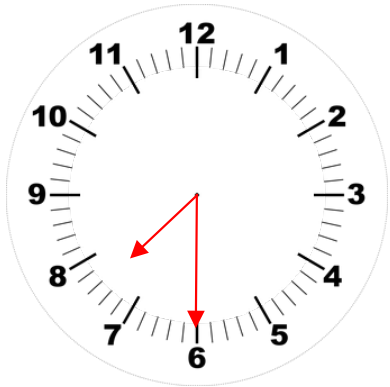
5 o' clock



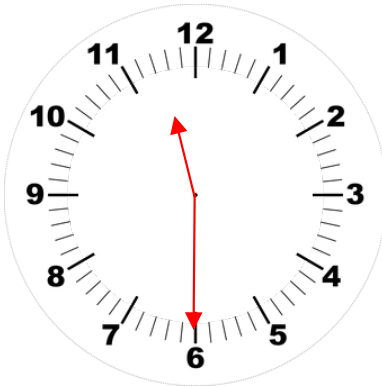
2 o' clock



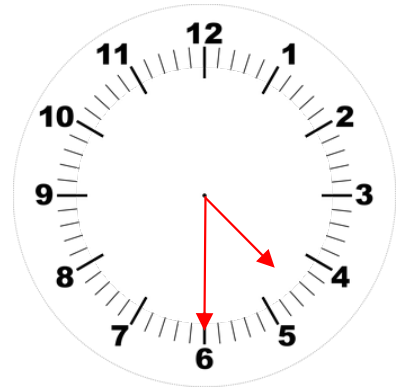
9 o' clock



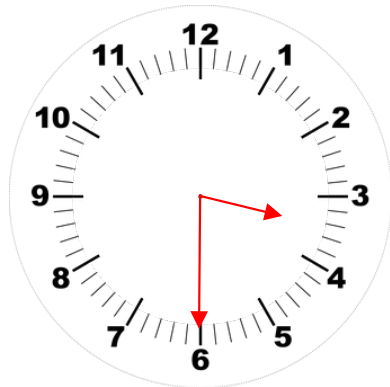
half past 7



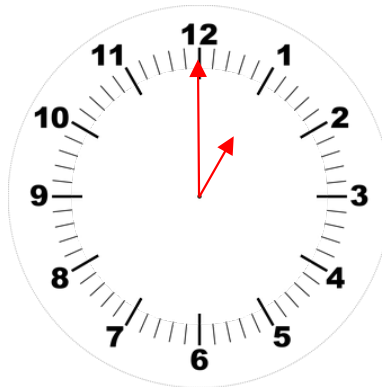
half past 11



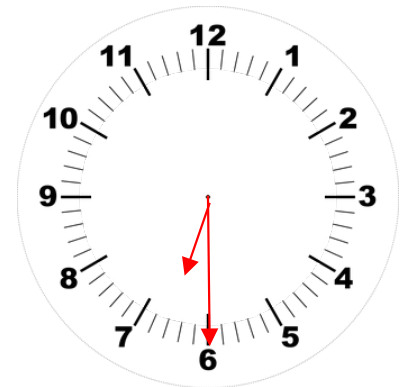
half past 4



half past 3



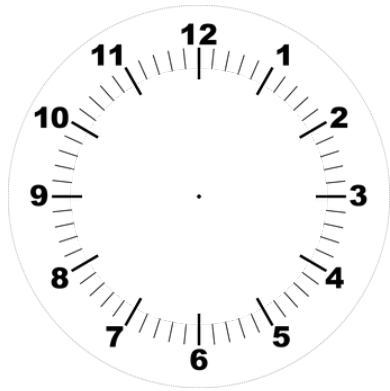
1 o' clock



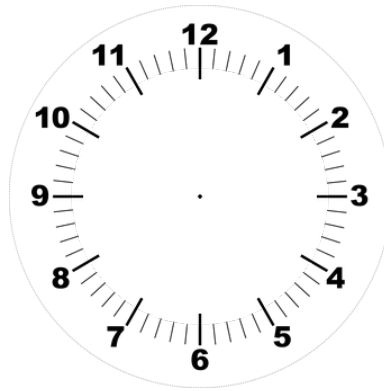
half past 6



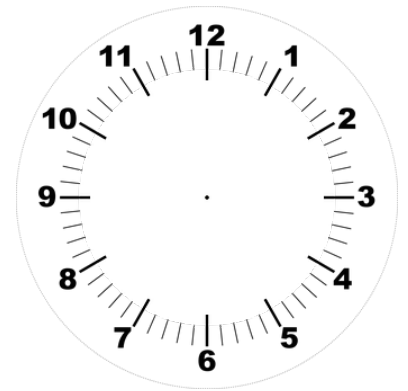
Draw hands on the clock to show the given time.



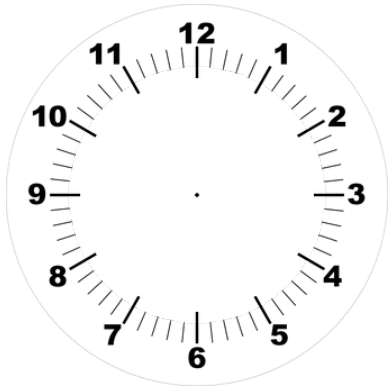
half past nine



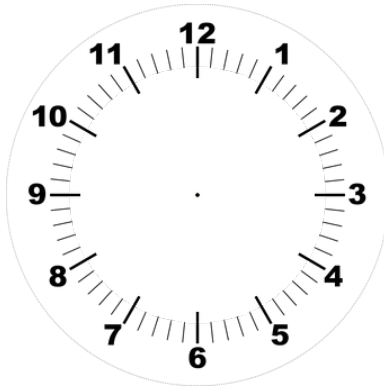
three o'clock



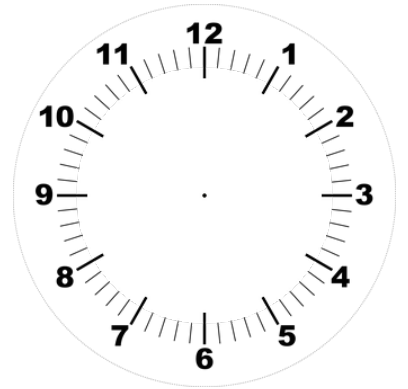
8 o'clock



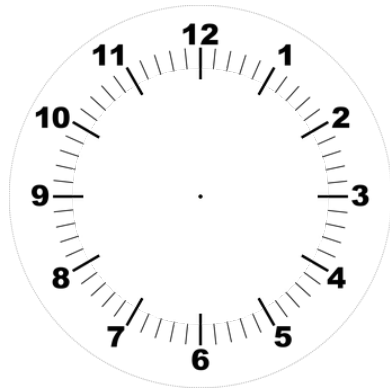
half past five



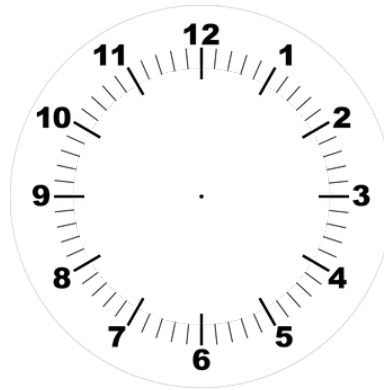
half past two



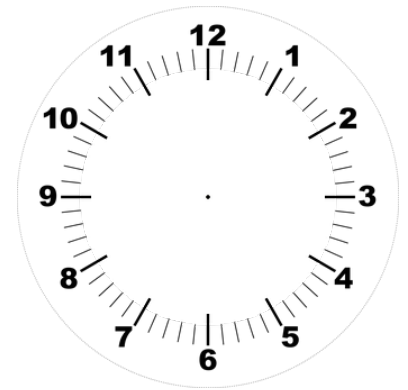
four o'clock



half past 1

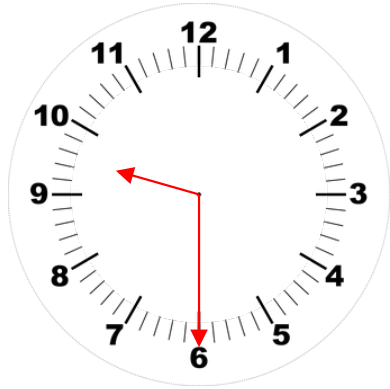


12 o'clock

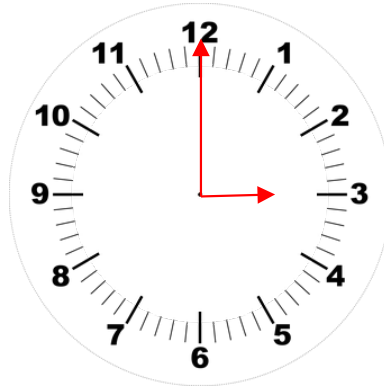


half past seven

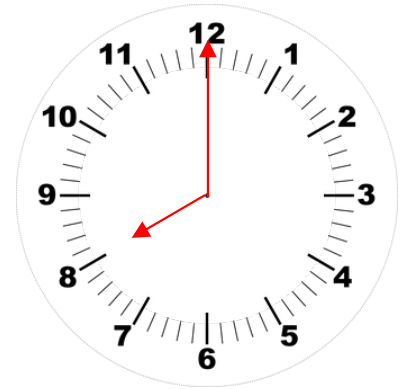
Draw hands on the clock to show the given time.



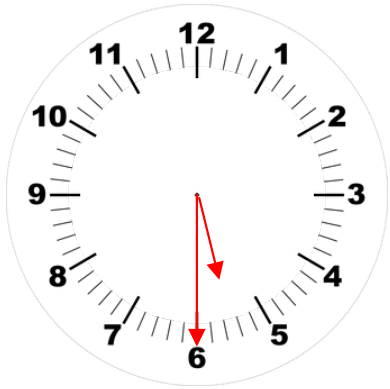
half past nine



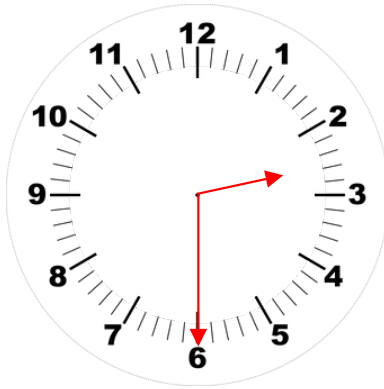
three o' clock



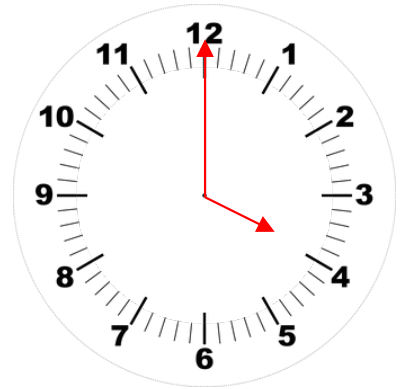
8 o' clock



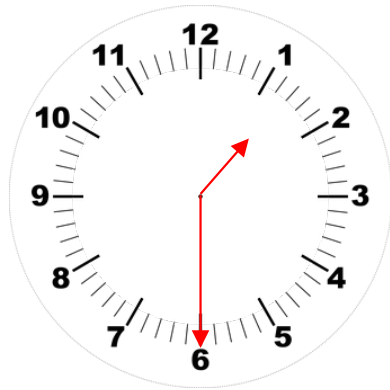
half past five



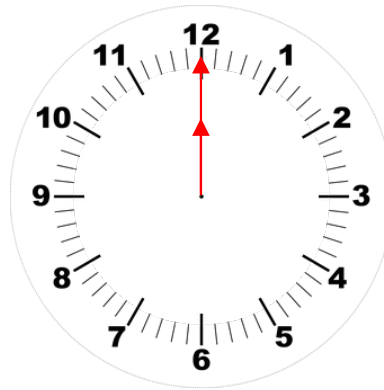
half past two



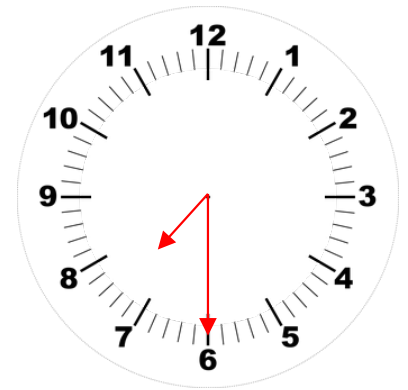
four o' clock



half past 1



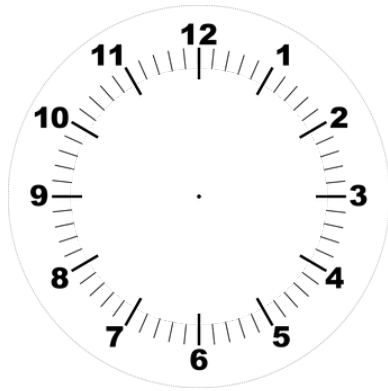
12 o' clock



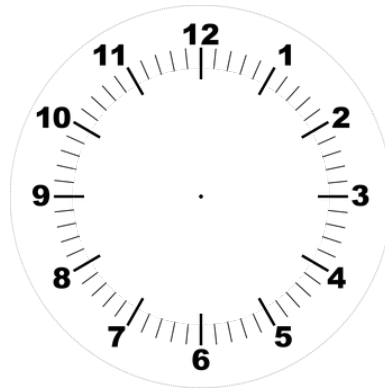
half past seven



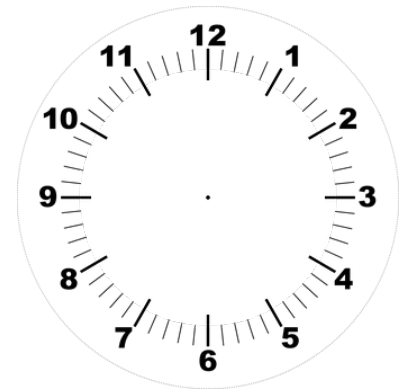
Draw hands on the clock to show the given time.



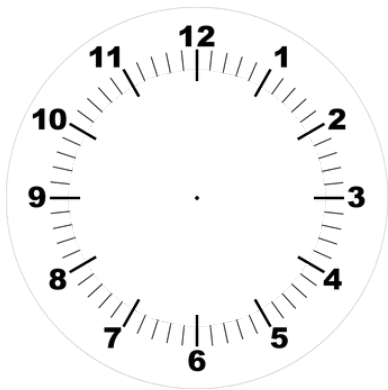
eight thirty



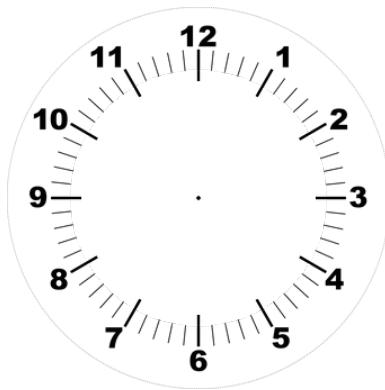
one hour after two o'clock



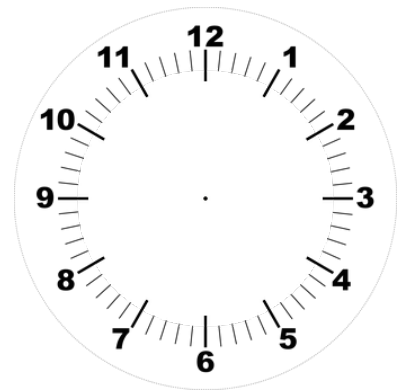
two hours before eleven thirty



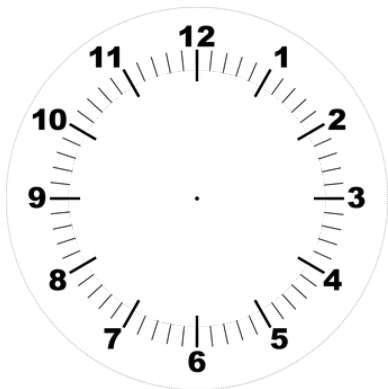
three hours after half past five



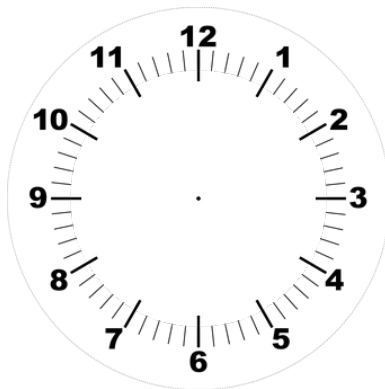
one hour before two thirty



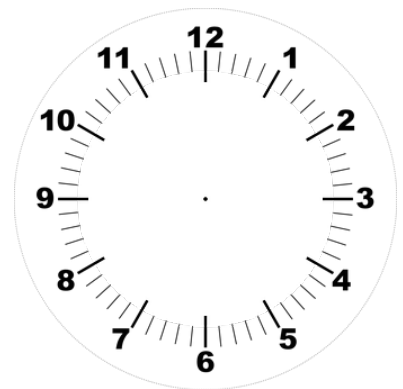
five hours before 5 o'clock



2 hours and 6 half an hours
before 3 o'clock



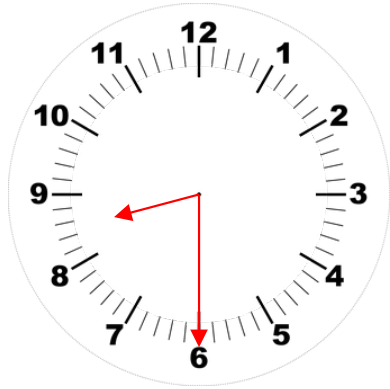
13 half an hours
after 3 o'clock



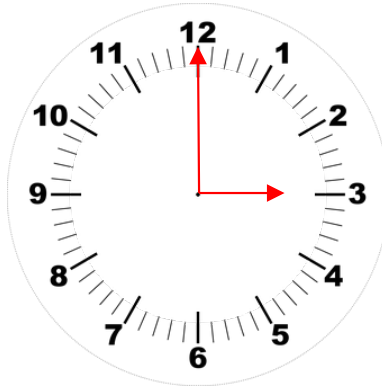
7 hours and 7 half an hours
before 12 o'clock



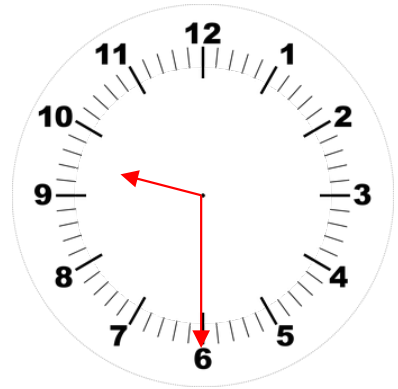
Draw hands on the clock to show the given time.



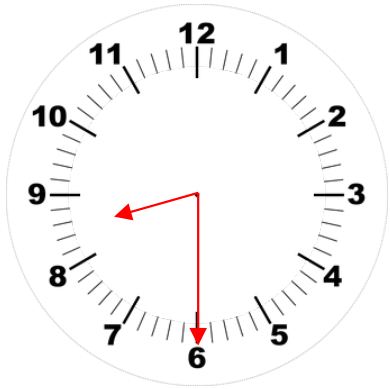
eight thirty



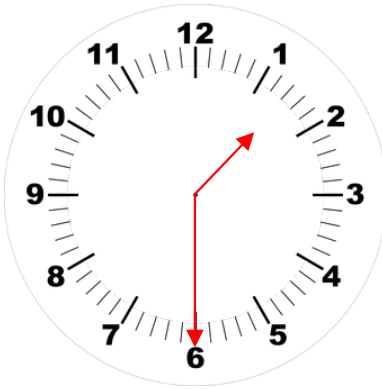
one hour after two o'clock



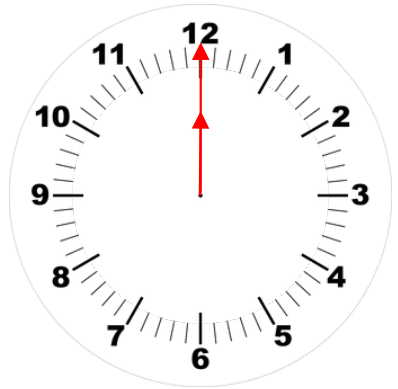
two hours before eleven thirty



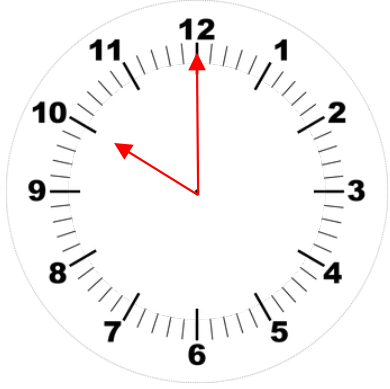
three hours after half past five



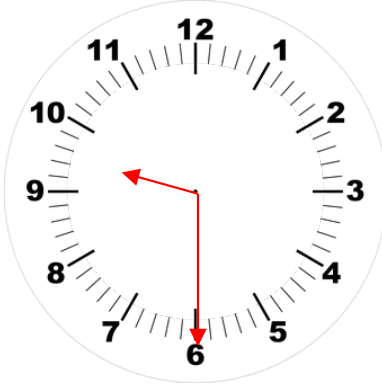
one hour before two thirty



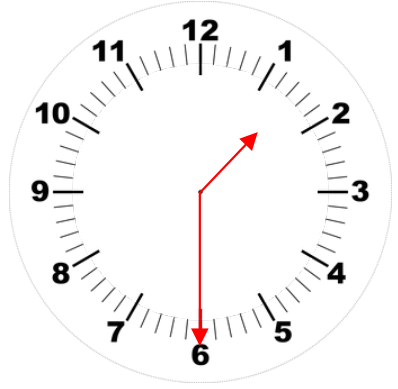
five hours before 5 o'clock



2 hours and 6 half an hours before 3 o'clock



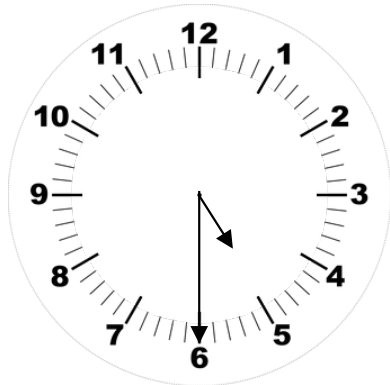
13 half an hours after 3 o'clock



7 hours and 7 half an hours before 12 o'clock

Malachi has drawn hands on the clock for half past 5.

Can you explain the mistake he has made?

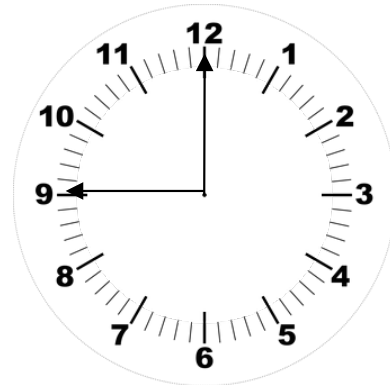


half past 5

masterthecurriculum.co.uk

Esin has drawn hands on the clock for 9 o'clock.

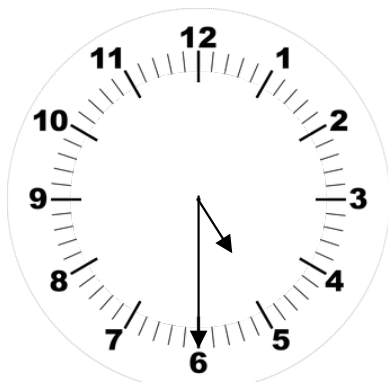
Spot the mistake.



9 o'clock

Malachi has drawn hands on the clock for half past 5.

Can you explain the mistake he has made?

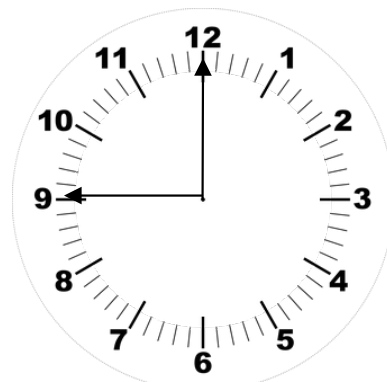


half past 5

masterthecurriculum.co.uk

Esin has drawn hands on the clock for 9 o'clock.

Spot the mistake.

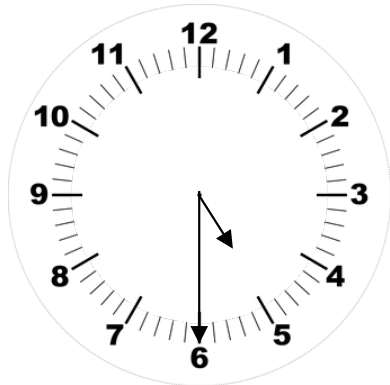


9 o'clock

Malachi has drawn hands on the clock for half past 5.

Can you explain the mistake he has made?

The hour hand is pointing at the 5, when it should be in between the 5 and 6.



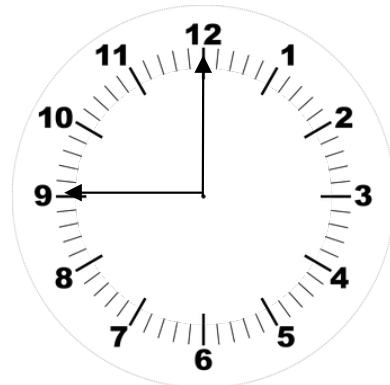
half past 5

masterthecurriculum.co.uk

Esin has drawn hands on the clock for 9 o'clock.

Spot the mistake.

Both hands are the same length. The hand pointing to the 9 should be shorter because it is the hour hand.

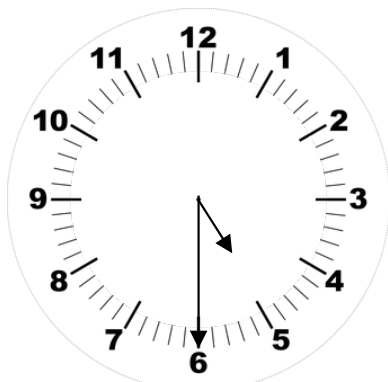


9 o'clock

Malachi has drawn hands on the clock for half past 5.

Can you explain the mistake he has made?

The hour hand is pointing at the 5, when it should be in between the 5 and 6.



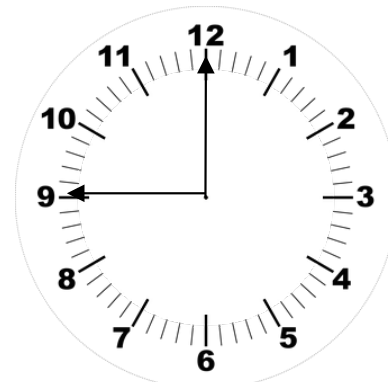
half past 5

masterthecurriculum.co.uk

Esin has drawn hands on the clock for 9 o'clock.

Spot the mistake.

Both hands are the same length. The hand pointing to the 9 should be shorter because it is the hour hand.



9 o'clock